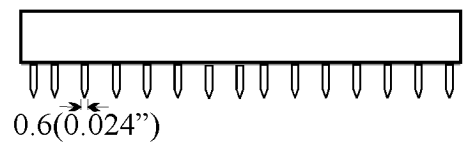
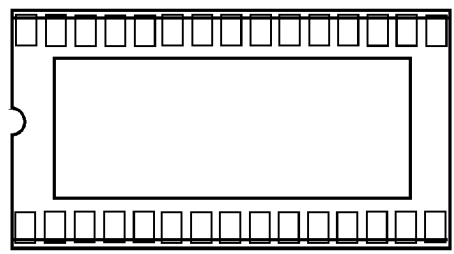
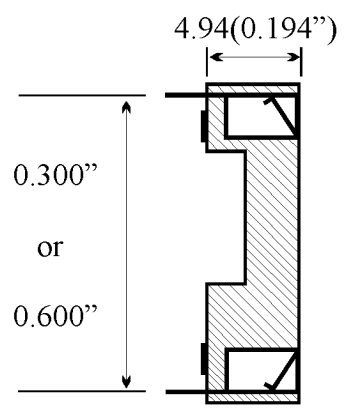


Revisions			
Rev	Description	Date	Approved

2.54(0.1")



RoHS Compliant
as of 4/19/2006



Do not Scale Drawings

Specification:

Material:

Insulator: Glass filled PBT (UL94V-0)
Contact: Dual-wipe Phosphor Bronze, Tin Plated
(Gold plated also available)

Electrical:

Current Rating: 1A min
Resistance: Tin-20 milliohms
Gold 10 milliohms
Insulation Resist: 5k Megohms min 500V DC
Op Temp: Continuous -40 c to +105 c
Dielectric Voltage: 1k VAC/minute
Insertion Force: 140g+-10
Withdrawal Force: 75g+-5

Remarks:

- (1) Part# + "W" = 24p, 28p (0.600") with central support
- (2) Part# + "N" = 24p, 28p (0.300") with central support
- (3) Part# + "WA" = 24p, 28p (0.600") w/o central support
- (4) Part# + "A" = 32p, 40p, 48p w/o central support

Pin Counts Available:

- (0.300") 6, 8, 14, 16, 18, 20, 22, 24, 28
- (0.600") 24, 28, 32, 36, 38, 40, 42, 48

Description:		Low Profile IC Socket 2.54 (0.1") Pitch	
Approvals	Date	Phyco 1740-A Junction Ave. San Jose, CA 95112 Drawing# 4100 -(XX)-(X) (XX=Total# Pins) (X= 3 (0.300") or 6 (0.600"))	
Drawn	3/10		
MAC	1999		
Checked			
Issued			

PHYco

1740-A Junction Ave
San Jose, CA 95112

Ph. 408-573-9044

Fax. 408-573-9045

April, 2006

PHYCO/JM, Inc.

CERTIFICATE OF COMPLIANCE- RoHS Declaration

For the following Series No's.

4100
4110
4120
4130

Imported By:
Phyco/JM, Inc
1740-A Junction Ave
San Jose, CA 95112

This is to certify that all components used in the above listed Phyco Series' are RoHS compliant and meet the requirements of the current RoHS Directive 2002/95/EC and do not contain above the specified limits of any of the below listed banned substances.

- | | |
|--|-----------------------|
| * Lead | * Hexavalent Chromium |
| * Polybrominated Biphenyls (PBB) | * Mercury |
| * Polybrominated Diphenylethers (PBDE) | * Cadmium |



Jennifer Mahoney
Product Compliance Manager
Phyco/JM, Inc.
408-573-9044
jpapaleo@phyco.com